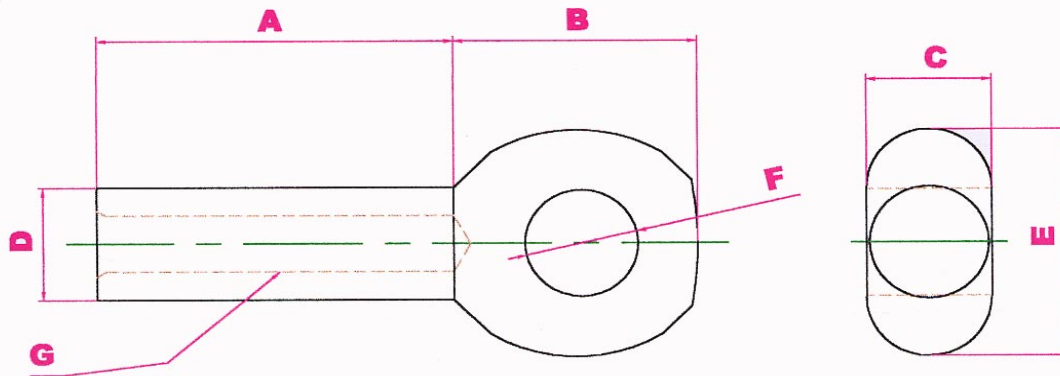


Silverline

Terminal End Body Sizes



Terminal Ends for STEEL WIRE

Part Number	Wire size	Connector Size	A Body & Bore Length	B Head Length	C Head Thickness	D Body Dia.	E Head Hight	F Eye Dia.	G Bore Dia.	Silverline Swage Die Size	Talurit Swage Die Size	Pressing Pressure Applied	D After pressing	Approx. weight in kilos
SLW10C10	10	10	75	45	20	34	40	21	11	17	14	200T	28	0,56
SLW10C13	10	13	92	56	32	34	55	26	11	17	14	200T	28	0,55
SLW12C10	12	10	75	45	20	34	40	21	13	17	14	200T	28	
SLW12C13	12	13	92	56	32	34	55	26	13	17	14	200T	28	
SLW14C10	14	10	75	45	20	34	40	21	13	17	14	200T	28	0,55
SLW14C13	14	13	92	56	32	34	55	26	15	17	14	200T	28	0,96
SLW16C13	16	13	92	56	32	34	55	26	17	17	14	200T	28	0,93
SLW18C16	18	16	95	64	38	40	57	31	19	19	18	300T	36	1,33
SLW20C16	20	16	95	64	38	40	57	31	21	19	18	300T	36	
SLW20C20	20	20	95	80	42	40	81	38	21	19	18	300T	36	1,73
SLW22C20	22	20	95	80	42	40	81	38	23	19	18	300T	36	1,74
SLW24C20	24	22	100	80	42	45	81	40	25	21	18	350T	39	2
SLW26C20	26	22	100	80	46	45	81	40	27	21	22	350T	39	1,95
SLW28C22	28	22	125	85	52	57	81	40	29	25	22	450T	44	2,98
SLW30C22	30	22	125	85	52	57	81	40	32	25	22	450T	44	2,85
SLW32C26	32	26	125	85	52	57	81	40	32	25	22	450T	44	2,85
SLW34C26	34	26	150	100	65	62	100	45	35	29	24	600T	48	5
SLW36C26	36	26	150	100	65	62	100	45	37	29	24	600T	48	5

The die size in blue are the Silverline dies and the yellow are Talurit dies.

All measurements in millimeters

Wires with fiber core should have the core replaced by the steel pin.

Elongation of the terminal body after clamping is about 10 - 15%



Verslunarþjónustan ehf.

Tel. +(354) 431 1111 Fax +(354) 431 1010

E-mail : ver@ver-ehf.is



FRASERBURGH ENGINEERING CO.

19 Reclaimed Ground

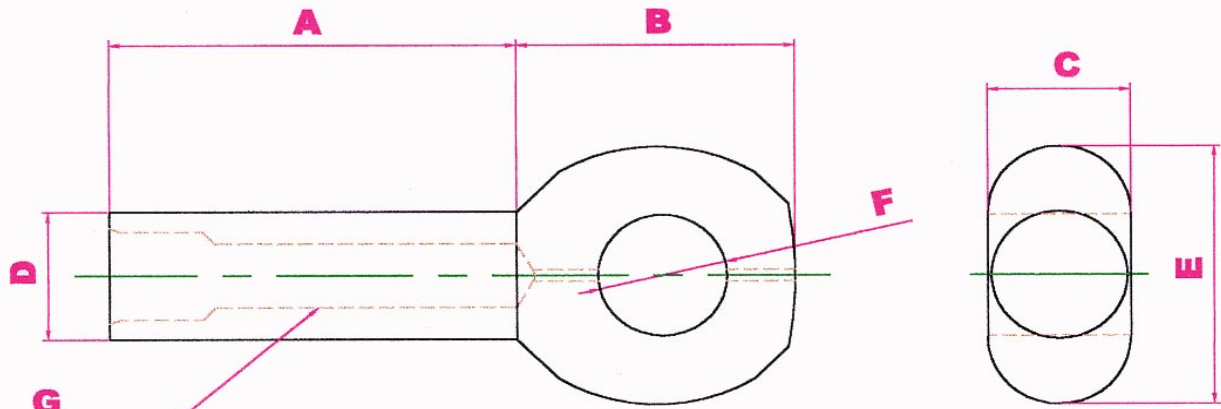
Fraserburgh, Scotland

Tel: +44 1346 514 284 Fax: +44 1346 516 797

Email: magnus@silverline.is

SILVERLINE

Combination Wire End Sizes



SILVERLINE Terminal Ends for Combination wire

Part Number	Wire size in mm	Connector size	A Body & Bore Length	B Head Length	C Head Thickness	D Body Diameter	E Head Height	F Eye Dia.	G Bore Diameter	Silverline Swage Die Size	Talurit Swage Die Size	Pressing Pressure Applied	Pin size	D After pressing
SLC14C13	14	13	92	56	32	34	55	26	15	17	14	200T	6	28
SLC16C13	16	13	92	56	32	34	55	26	17	17	14	200T	6	28
SLC18C13	18	13	92	56	32	34	55	26	19	17	14	200T	6	28
SLC20C13	20	13	92	56	32	34	55	26	21	17	14	200T	6	28
SLC22C13	22	13	95	56	32	40	55	26	23	19	18	270T	6	36
SLC24C13	24	13	95	56	32	40	55	26	25	19	18	270T	6	36
SLC24C16	24	16	95	64	38	40	57	31	25	19	18	270T	6	36
SLC26C16	26	16	95	64	38	40	57	31	27	19	18	270T	8	36
SLC28C16	28	16	95	64	38	40	57	31	29	19	18	270T	8	36

The die size in blue are the Silverline dies and the yellow are Talurit dies.

All measurements in millimeters Included in the bag with the terminal end is a steel pin that should be inserted through the hole at the front of the terminal end, before clamping.

Elongation of the terminal body after clamping is about 10 - 12%

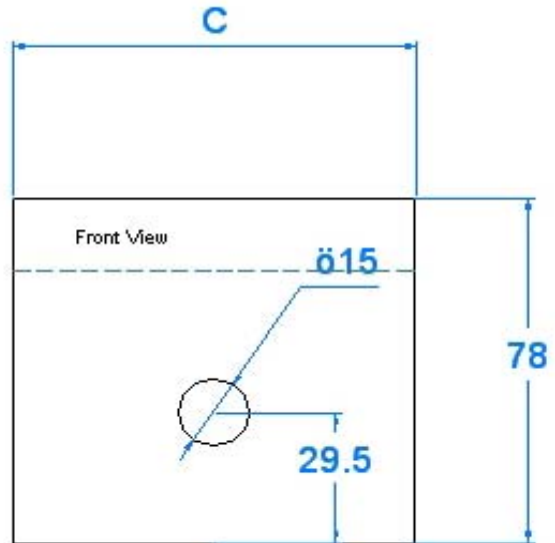
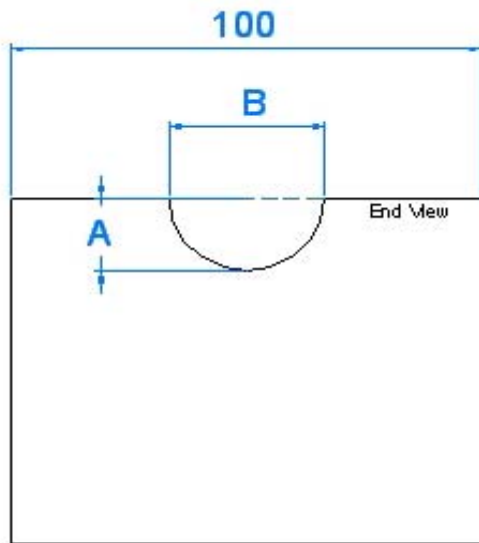


FRASERBURGH ENGINEERING CO.
 19 Reclaimed Ground
 Fraserburgh, Scotland
 Tel: +44 1346 514 284
 Fax: +44 1346 516 797
 Email: magnus@silverline.is



Verslunarpjónustan ehf.
 Tel +(354) 431 1111
 Fax +(354) 431 1010
 E-mail : ver@ver-ehf.is

Silverline Products.



SILVERLINE SWAGING DIES

Wire size	Silverline Swage Die Size	A	B	C
14 - 16mm	17	14,7mm	32mm	76mm
18 - 22mm	19	16,5mm	37mm	85mm
24 - 26mm	21	17,5mm	38mm	94mm
28 - 32mm	25	19,8mm	45mm	120mm
34 - 36mm	29	23mm	48mm	120mm



FRASERBURGH ENGINEERING CO.
 19 Reclaimed Ground
 Fraserburgh, Scotland
 Tel: +44 1346 514 284
 Fax: +44 1346 516 797
 Email: magnus@silverline.is



Verslunarpjónustan ehf.
 Tel +(354) 431 1111
 Fax +(354) 431 1010
 E-mail : ver@ver-ehf.is



THE SILVERLINE TERMINAL END

Procedure For Clamping Steel/ Polypropylene Core Wire

(For wire sizes refer to chart)

1. Using insulating or duct tape, mark off the wire 95mm (A ref. data sheet) back from the wire end, which is the same length as the body and the hole into which the wire is inserted.
2. Cut out the centre core 20mm longer than the pin. Insert the pin and return lay of wire to original condition. (For polypropylene only)
3. Enter the wire into THE SILVERLINE TERMINAL END, up to the 95mm (A) mark previously taped onto the wire. A hammer may have to be used to tap the end up to the mark.
4. Fit SILVERLINE dies (ref. data sheet) into the clamping machine.
5. Position the Terminal End with the wire inserted into the clamping machine dies, so that the neck of the end is 3mm from the end of the die.
6. Clamp the end once at recommended tonnage (ref. data sheet) and release. Reposition the Terminal End on the die until 5mm of the die is exposed. Clamp the end once more at the recommended tonnage. The body length of the end should have increased from 95mm to about 105 – 110mm after this operation
7. One of the most important aspects of the clamping is to ensure that the body length increases by 10 – 15%. Ensuring that the metal being clamped has nowhere else to go under compression, other than along the length of the terminal. After filling all the voids of the wire inside of the Terminal End. The compressed metal will extend the length of The SILVERLINE Terminal End to the required percentage.
8. A flash will appear down the side of the Terminal after clamping. This may be ground off with a hand grinder. (It was once the practice of the clamping operator to turn the terminal on its side in the die and clamp again so that he did not have to remove the flash with a grinder. In effect what he was doing was to forcibly implode the flash into the body of the Terminal and create a flaw along the body length of Terminal End, dramatically reducing its strength. Under no circumstances must this procedure be reproduced SILVERLINE TERMINAL END.)

Note: Clamping tonnages are for reference only. The elongation is the most important factor. All clamping machines do not reproduce the same results using these tonnage settings. Please record your own settings to ensure consistent results every time.

ALSO FROM SILVERLINE ARE: CONNECTORS, SWIVEL-CONNECTORS AND DUPLEX-CONNECTORS. THIMBLES FOR WIRES AND DYNEEMA. SWIVELS. GOOD PRODUCTS AT FAIR PRICE.